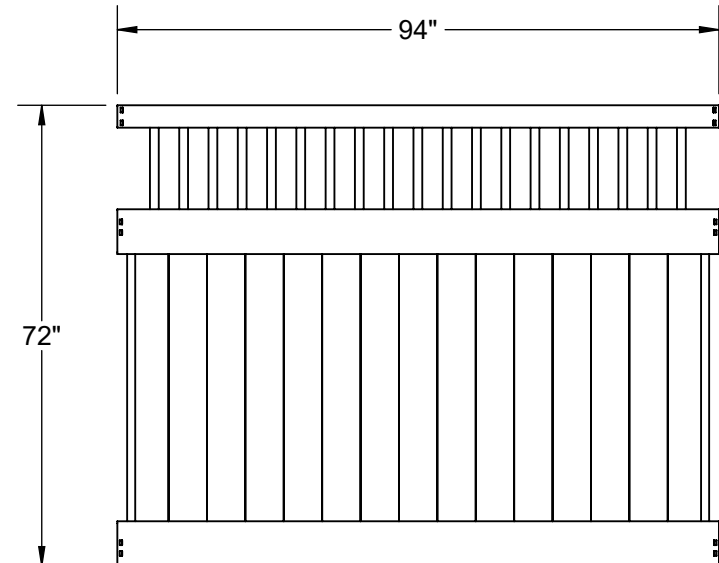
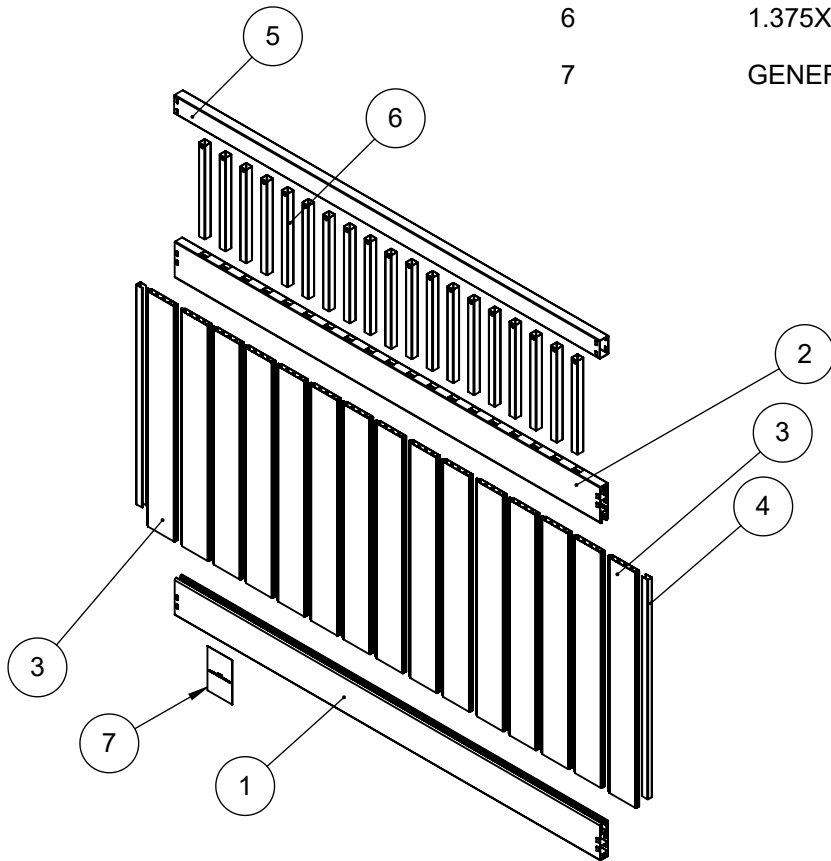


ITEM
NO.

DESCRIPTION

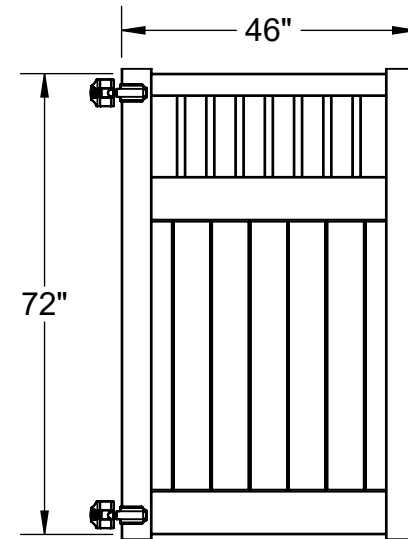
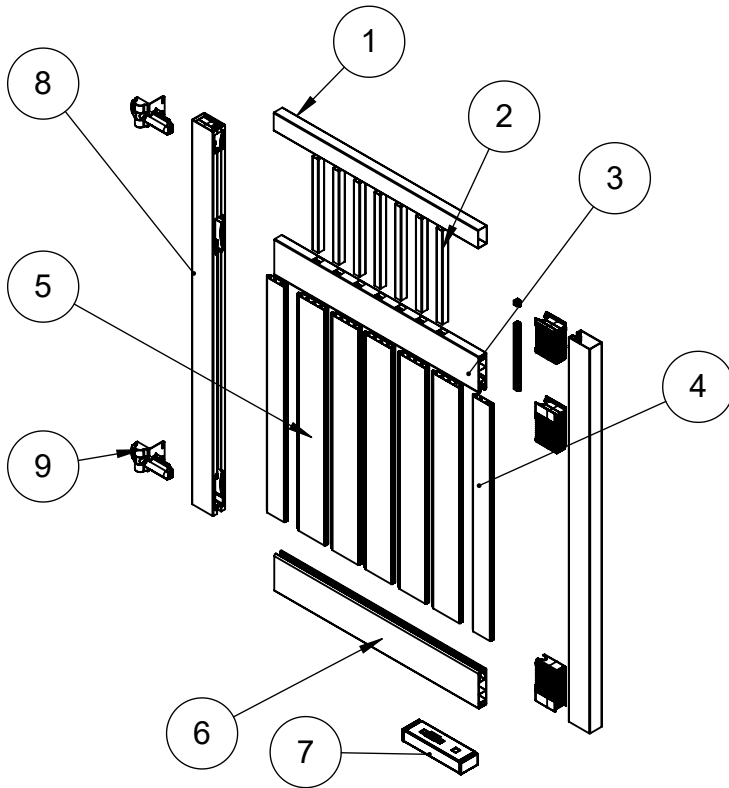
1	1.75X7X94 DECO W/ BARB EXTR
2	1.75X7X94 SGL RTE 1.3X1.3 DECO W/ BARB
3	.875X6X45 W/.035 GLIDELOCK
4	1.02X1.379X42 EXTR U-CHANNEL
5	2X3.5X94 SGL RTE 1.3X1.3X19 XCT WHITE
6	1.375X1.375X17.875 EXTR
7	GENERIC INSTR CARD VF/VG - PRO/SO 2020



ITEM
NO.

DESCRIPTION

1	2X3.5X45.125 SGL RTE 1.3X1.3X7 WHITE
2	1.375X1.375X17.875 EXTR
3	1.75X7X45.125 SGL RTE 1.3X1.3X7 WHITE
4	.875X4X45 W/.050 GL EXTR WHITE
5	.875X6X45 W/.035 GLIDELOCK
6	1.75X7X45.125 DECO W/ BARB EXTR
7	2.25X3.875X13.25 PRIV GATE HWBOX-WHITE
8	2.75X4.70X73.5 IGP 1X7-2X3 RTE XCT W/UPI
9	HEAVY DUTY HINGE PAIR BLACK



ITEM
NO.

DESCRIPTION

1	2X3.5X57.125 SGL RTE 1.3X1.3X10 WHITE
2	1.375X1.375X17.875 EXTR
3	1.75X7X57.125 SGL RTE 1.3X1.3X10 WHITE
4	.875X4X45 W/.050 GL EXTR WHITE
5	.875X6X45 W/.035 GLIDELOCK
6	1.75X7X57.125 DECO W/ BARB EXTR
7	2.25X3.875X13.25 PRIV GATE HWBOX-WHITE
8	2.75X4.70X73.5 IGP 1X7-2X3 RTE XCT W/UPI
9	HEAVY DUTY HINGE PAIR BLACK

